

# Product datasheet

## sHLA-A\*02:03bio

A\*0203, A0203, A\*02, A02, A203



<b>Serological Name</b>	A203
<b>Peptide Load</b>	Endogenous
<b>Modification</b>	Unmodified
<b>Conjugation</b>	Biotin
<b>SKU</b>	A0203bio

### Product Description

<b>Allele Name</b>	A*02:03 B2m
<b>HLA Class</b>	HLA Class I
<b>HLA Gene Locus</b>	HLA-A
<b>Alternative Allele Name A Chain</b>	A*0203, A0203, A*02, A02, A203
<b>Alternative Allele Name B Chain</b>	-
<b>Description</b>	Recombinant, truncated Class I soluble Human Leukocyte Antigen (sHLA), naturally folded and glycosylated, loaded with endogenous peptides.
<b>Serological Name</b>	A203
<b>Serological Split</b>	A2
<b>Bw4/Bw6 Assignment</b>	-
<b>Bw4/Bw6 Sequence</b>	-
<b>Allele Frequency [World Population]</b>	
<b>A chain</b>	2.80%
<b>B chain</b>	-

### Associated products

[A0203](#)  
[A0203pe](#)

## Product Specification

<b>Product name</b>	HLA-A*02:03bio
<b>HLA Species</b>	Human
<b>Host Cell Line Species</b>	Human
<b>Clone Designation</b>	G6
<b>Tail Specification</b>	VLDL
<b>Peptide Load</b>	Endogenous
<b>Modification</b>	Unmodified
<b>Conjugation</b>	Biotin
<b>Complexity</b>	Monomer
<b>Protein Format</b>	Recombinant, truncated, soluble, non-modified, biotinylated, endogenously loaded
<b>Storage Temperature</b>	4 °C (This product should be stored undiluted)
<b>Form</b>	Liquid
<b>Concentration</b>	300.0 µg/µl
<b>Formulation</b>	PBS/0.02% Sodium Azide
<b>pH</b>	7.4
<b>Purification Method</b>	Affinity Chromatography
<b>Grade</b>	Research Use Only [RUO]
<b>Authentication Verification</b>	Sequence Based Typing

## Protein Sequences

<b>Alpha Chain Sequence</b>	GSHSMRYFFT SVSRPGRGEP RFIAVGYVDD TQFVRFSDSA ASQRMEPRAP WIEQEGPEYW DGETRKVKAH SQTHRVDLGT LRGYYNQSEA GSHTVQRMYG CDVGSQDWRFL RGYHQYAYDG KDYIALKEDL RSWTAADMAA QTTKKHWETA HEAEQWRAYL EGTCVEWLRRL YLENGKETLQ RTDAPKTHMT HHAVSDHEAT LRCWALSFPY AEITLTWQRD GEDQTQDTEL VETRPAGDGT FQKWAAVVVP SGQEQRYTCH VQHEGLPKPL TLRVSVSTDD DLA
<b>Beta Chain Sequence</b>	IQRTPKIQVY SRHPAENGKS NFLNCYVSGF HPSDIEVDLL KNGERIEKVE HSDLSFSKDW SFYLLYYTEF TPTEKDEYAC RVNHVTLSPQ KIVKWDRDM

## Related Products

[A0201bio](#)  
[A0207bio](#)  
[A2402bio](#)  
[B0702bio](#)

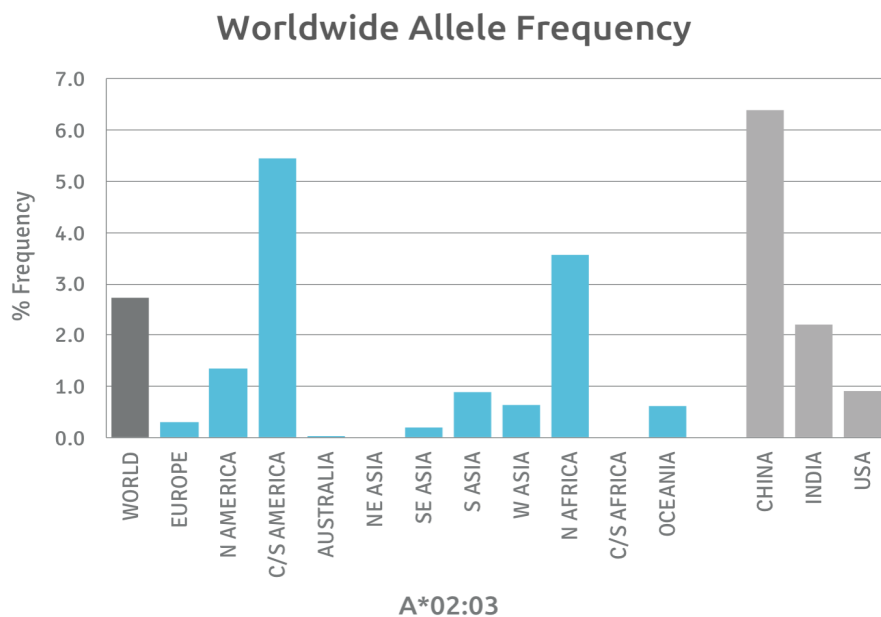
## Applications

HLA Sandwich ELISAs  
HLA Direct ELISAs  
HLA-Sera Antibody Assays  
HLA Controls in ELISA Assays  
HLA Assay Standards  
HLA Blocking Assays  
HLA Neutralizing Assays  
HLA Competition Assays  
HLA Bead Assays  
HLA Immunization Procedures

## Recommended Antibodies

W6/32  
Anti-B2m

## Allele Frequency



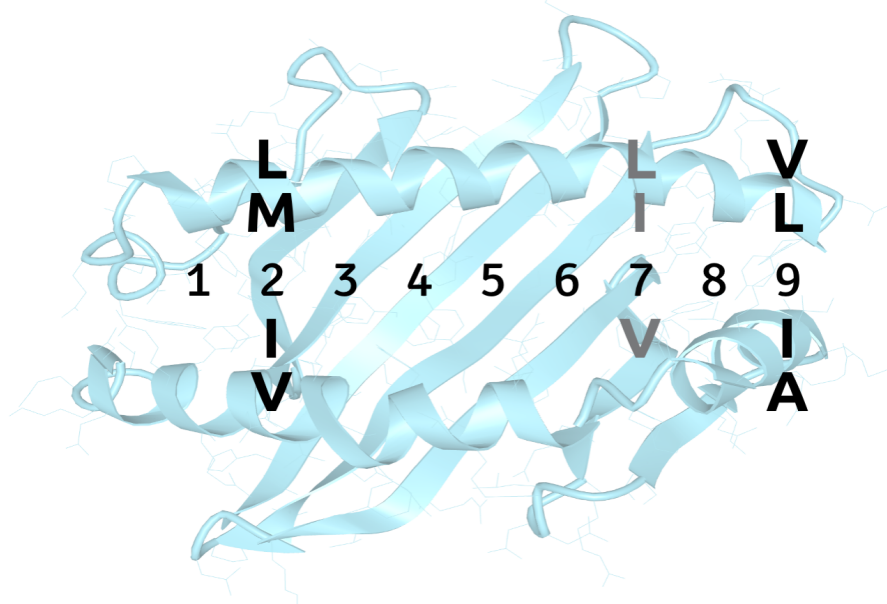
Please note:  
ALL PRODUCTS ARE FOR RESEARCH USE ONLY. NOT FOR COMMERCIAL USE IN DIAGNOSTIC PROCEDURES.  
For more information, please visit our Policies section on our website. For licensing inquiries, please contact

[licensing@hlaprotein.com](mailto:licensing@hlaprotein.com)

 HLA Protein  
PURE PROTEIN, LLC

## Motif

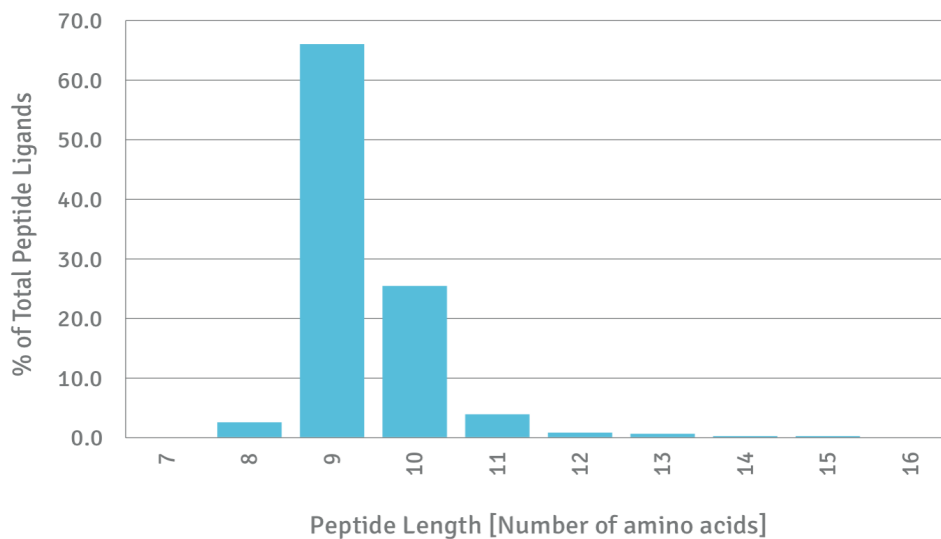
### A\*02:03 BINDING MOTIF



## Length Distribution

### HLA Length Distribution

**A\*02:03**



Please note:

ALL PRODUCTS ARE FOR RESEARCH USE ONLY. NOT FOR COMMERCIAL USE IN DIAGNOSTIC PROCEDURES.

For more information, please visit our Policies section on our website. For licensing inquiries, please contact

[licensing@hlaprotein.com](mailto:licensing@hlaprotein.com)

**Eplet Assignments**

**A\*02:03**

Eplet	Polymorphic Residues	Antibody Reactivity
9F	9F	
44RM	44R45M	
44RME	44R45M46E(67V)	
62GE	62G63E	Yes
62GK	62G66K (74H77D)	Yes
65RA	65R69A	
65RK	65R66K	
66K	66K	
66KA	66K69A	
66KH	66K70H	
71HS	70H71S	
76VDT	76V77D80T	
77D	77D	
79GT	79G80T	Yes
80T	80T	
80TL	80T81L	
95V	95V	
97R	97R	
99Y	99Y	
105S	105S	
107W	107W	Yes
109F	109F	
114H	114H	
116Y	116Y	
127K	127K	Yes
144K	144K	Yes
144TKH	142T144K145H	Yes
145HT	144K145H149T	
149TAH	149T150A151H	Yes
150AH	150A151H	
151AHE	150A151H152E	
151H	151H	
152E	152E	
156WA	156W158A	
163T	163T	
184A	184A	
193AV	193A194V	
194V	194V	
207S	207S	
253Q	253Q	Yes

